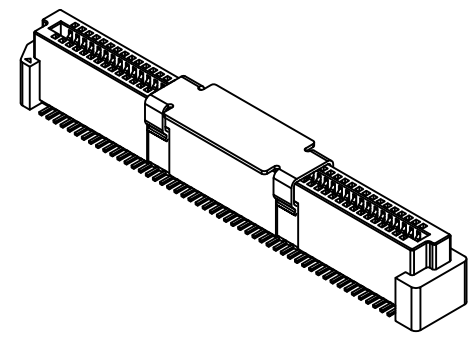
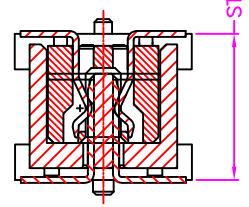
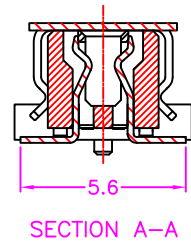


P.C.B LAYOUT
TOP VIEW ±0.05



MATERIALS

HOUSING: HI-TEMP. PLASTIC (UL 94V-0)
CAP: SUS
TERMINAL: COPPER ALLOY, GOLD PLATED

SPECIFICATION

CURRENT RATING: 0.5 AMP MAX
DIELECTRIC WITHSTANDING: 250V AC FOR ONE MINUTE
CONTACT RESISTANCE: 50m OHMS MAX
INSULATION RESISTANCE: 1000M OHMS MIN AT DC 500V
OPERATION TEMPERATURE: -40°C~+80°C

PART NUMBER:

ABBBB - * * * * - 1 2 2 *

SERIES

NO. OF POS.
REF. TABLE

CODE OPTION
(1 ~ 2)

TAPE REEL PACKAGE

CONTACT PLATED OPTION

- 1: GOLD FLASH
- 3: 3u" GOLD
- 5: 5u" GOLD
- 7: 15u" GOLD
- 9: 30u" GOLD

TABLE

"*" AVAILABLE POSITION

CODE		POS.	DIMENSIONS		
H1	H2		A	B	C
*	*	060	29.80	28.20	23.20
*	*	080	37.80	36.20	31.20
*	*	100	45.80	44.20	39.20
*	*	120	53.80	52.20	47.20
*	*	140	61.80	60.20	55.20

CODE	1				2			
H	3.70				7.70			
X	5.0	6.0	7.0	8.0	9.0	10.0	11.0	12.0



TOLERANCES

X.±0.40	.XX±0.20
.X±0.30	.XXX±0.10

REV.	A	DRAWN BY	Kiki 2022/12/29	TITLE	BTB, 0.80mm PITCH, PCB MOUNT, SMT, FEMALE				
		APPROVED BY	Lion 2022/12/29	DRAW NO.	ABBBB-002	UNIT	MM	Sheet	1/1