

MATERIALS

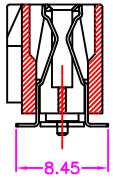
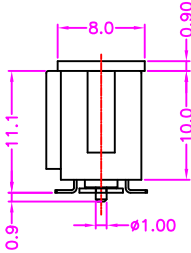
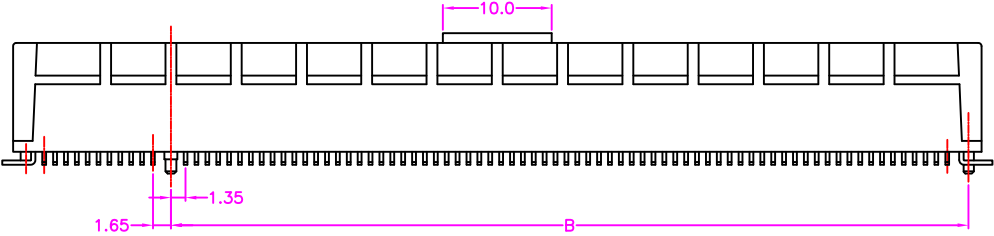
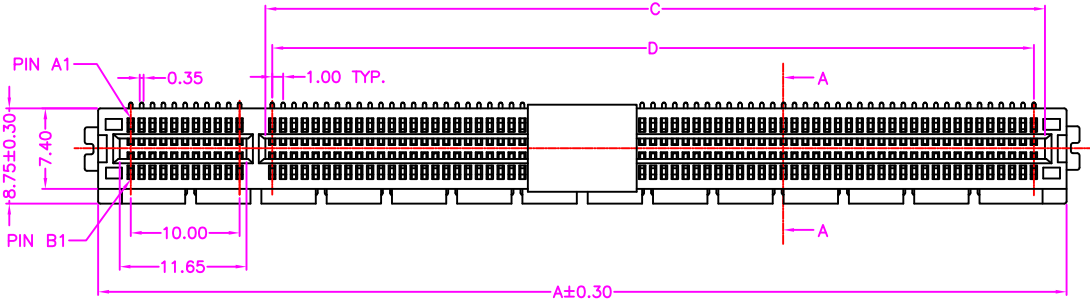
HOUSING: NYLON 9T (UL 94V-0), BLACK
 CAP: NYLON 9T (UL 94V-0), BLACK
 SOLDER PAD: COPPER ALLOY, TIN PLATING
 TERMINAL: COPPER ALLOY, GOLD PLATED ON CONTACT AREA
 TIN PLATING ON SOLDER TAIL

SPECIFICATION

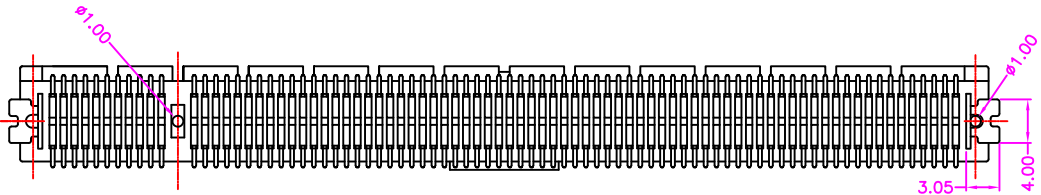
CURRENT RATING: 1.1 AMP MAX
 DIELECTRIC WITHSTANDING: 500V AC FOR ONE MINUTE
 CONTACT RESISTANCE: 30m OHMS MAX
 INSULATION RESISTANCE: 1000M OHMS MIN AT DC 500V
 OPERATION TEMPERATURE: -40°C~+85°C

TABLE

DIMENSIONS				
POS.	A	B	C	D
036	25.00	9.15	7.65	6.00
064	39.00	23.15	21.65	20.00
098	56.00	40.15	38.65	37.00
164	89.00	73.15	71.65	70.00



SECTION: A-A



PART NUMBER:

MCEEE - * * * * T - 1 * 3

SERIES
 NO. OF POS. REF. TABLE
 PACKAGE OPTION
 2: TAPE REEL
 3: TUBE
 TIN PLATING ON SOLDER TAIL

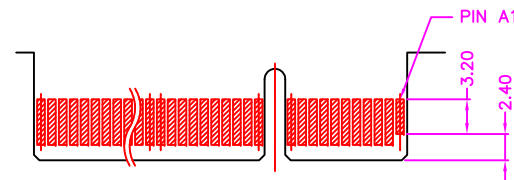
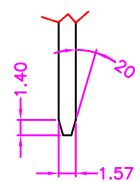
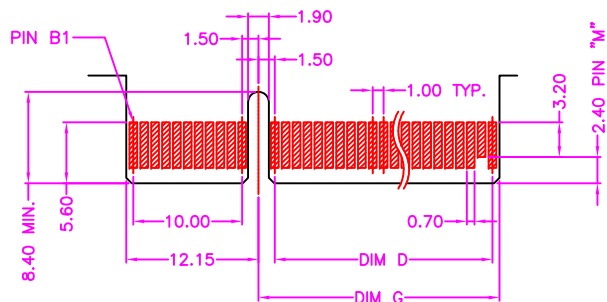
CONTACT PLATED OPTION
 1: GOLD FLASH
 3: 3u" GOLD
 5: 5u" GOLD
 6: 10u" GOLD
 7: 15u" GOLD
 9: 30u" GOLD



TOLERANCES
 X.±0.40 .XX±0.20
 .X±0.30 .XXX±0.10

REV. A DRAWN BY Kiki 2023/11/14
 APPROVED BY Lion 2023/11/14

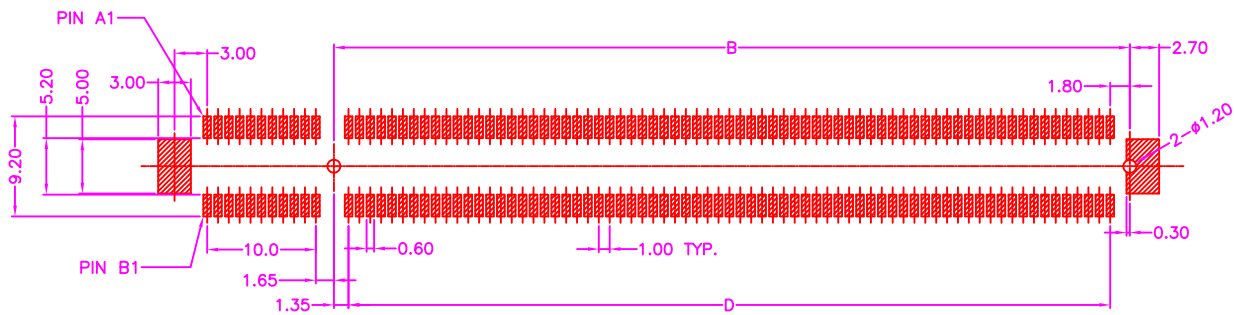
TITLE PCI EXPRESS, 1.00mm PITCH, PCB MOUNT, SMT, 1 KEY, WITH POST, FEMALE
 DRAW NO. MCEEE-003 UNIT MM Sheet 1/2



I/O PANEL DIRECTION
PRIMARY (COMPONENT) SIDE

NOTES:
CHAMFER EDGE MUST BE FREE OF CUTTING BURRS

SECONDARY (SOLDER) SIDE



P.C.B. LAYOUT
TOP VIEW ±0.05

TABLE

DIMENSIONS						
POS.	A	B	C	D	G	M
036	25.00	9.15	7.65	6.00	8.15	B17
064	39.00	23.15	21.65	20.00	22.15	B31
098	56.00	40.15	38.65	37.00	39.15	B48
164	89.00	73.15	71.65	70.00	72.15	B81