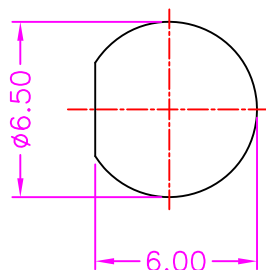
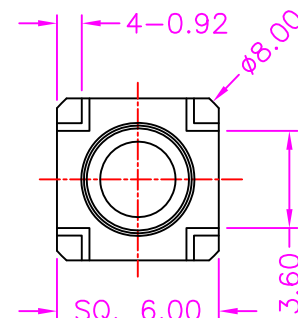
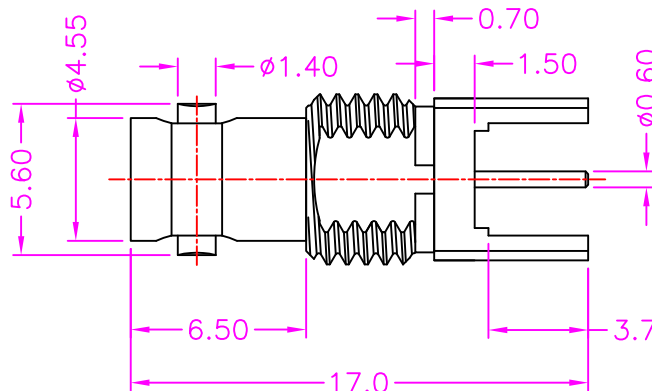


NUT



RECOMMENDED MOUNTING HOLE DIMENSIONS



MATERIALS

INSULATOR: TEFLON (UL 94V-0), WHITE  
 HOUSING: BRASS, GOLD PLATING  
 BODY: BRASS, GOLD PLATING  
 TERMINAL: COPPER ALLOY, GOLD PLATED  
 NUT: BRASS, NICKEL PLATING

SPECIFICATION

IMPEDANCE: 75 OHM  
 WORKING FREQUENCY: DC ~ 12 GHz  
 VSWR: 1.5 MAX  
 OPERATION TEMPERATURE: -65°C~+165°C

PART NUMBER:

RBNJE - 7 \* 1 - 1 1 1

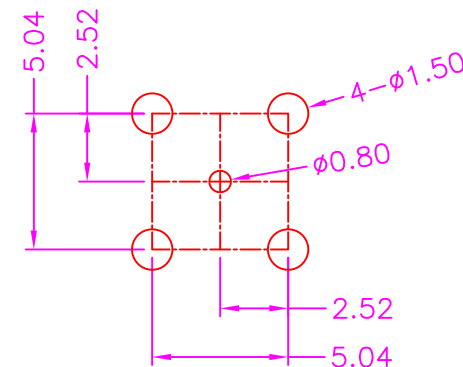
SERIES

75 OHM

TRAY PACKAGE

CONTACT PLATED OPTION

- 1: GOLD FLASH
- 3: 3u" GOLD
- 5: 5u" GOLD
- 6: 10u" GOLD
- 7: 15u" GOLD
- 9: 30u" GOLD



P.C.B LAYOUT TOP VIEW ±0.05