

P.C.B LAYOUT
TOP VIEW ±0.05

PART NUMBER:

JPJAA - * * - 1 4 6

SERIES

BAG PACKAGE

INNER PIN OPTION

CIRCUIT OPTION
REF. TABLE

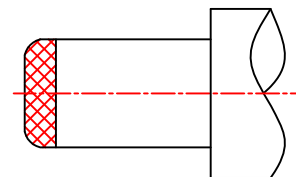
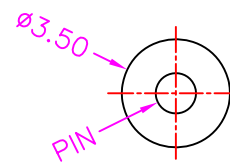
- 6: $\phi 1.65\text{mm}$
- 8: $\phi 1.30\text{mm}$
- 9: $\phi 1.10\text{mm}$
- A: $\phi 1.00\text{mm}$

MATERIALS

HOUSING: PBT (UL 94V-0), BLACK
INNER PIN: SPCC, TIN PLATING
SPRING: SUS, TIN PLATING
TERMINAL: SPCC, TIN PLATING

SPECIFICATION

CURRENT RATING: 30V, 2 AMP MAX
DIELECTRIC WITHSTANDING: 500V AC FOR ONE MINUTE
CONTACT RESISTANCE: 50m OHMS MAX
INSULATION RESISTANCE: 100M OHMS MIN AT DC 500V
OPERATION TEMPERATURE: $-40^{\circ}\text{C}\sim+85^{\circ}\text{C}$
MATING & UNMATING FORCE: 0.30KG~3.05KG



TABLE

SCHEMATIC	
A	B



TOLERANCES	
X.±0.40	.XX±0.20
.X±0.30	.XXX±0.10

REV.	A	DRAWN BY	Candy 2021/8/23	TITLE	DC POWER JACK, PCB MOUNT, R/A, H=7.30mm				
		APPROVED BY	Lion 2021/8/23	DRAW NO.	JPJAA-006	UNIT	MM	Sheet	1/1