

**MATERIALS**

HOUSING: HI-TEMP. PLASTIC (UL 94V-0)  
SHELL: SPCC, NICKEL PLATING  
TERMINAL: COPPER ALLOY, GOLD PLATED ON CONTACT AREA  
TIN PLATING ON SOLDER TAIL

**SPECIFICATION**

CURRENT RATING: 0.5 AMP MAX  
DIELECTRIC WITHSTANDING: 500V AC FOR ONE MINUTE  
CONTACT RESISTANCE: 30m OHMS MAX  
INSULATION RESISTANCE: 100M OHMS MIN AT DC 500V  
OPERATION TEMPERATURE: -40°C~+85°C

**PART NUMBER:**

BHDBA - 1 9 \* T - 1 2 6

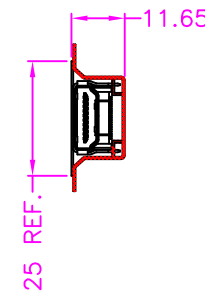
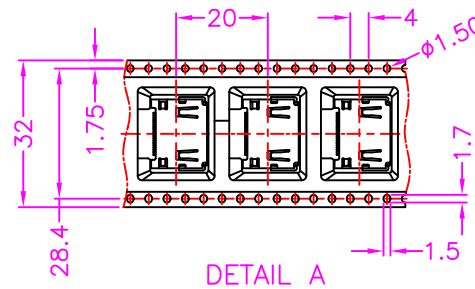
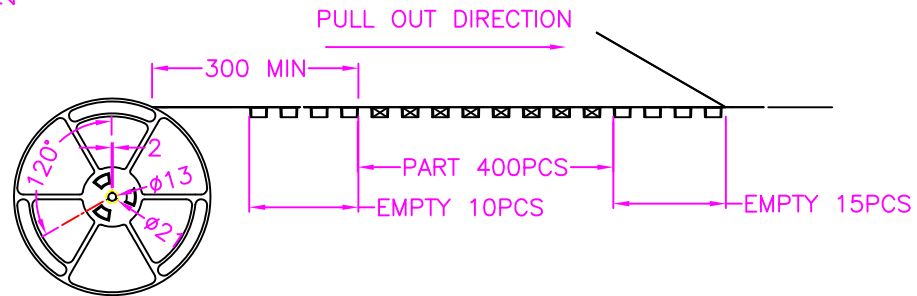
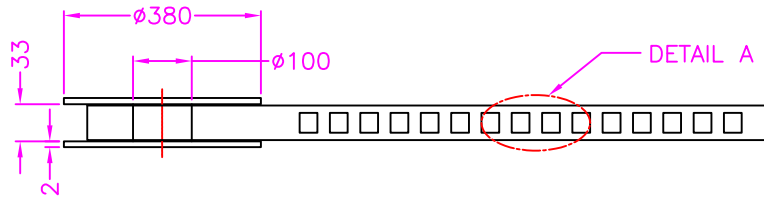
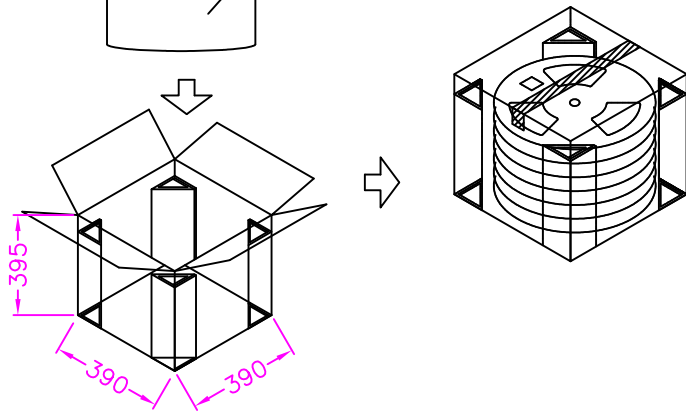
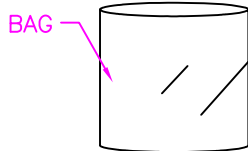
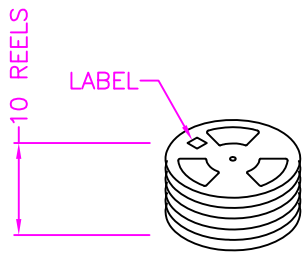
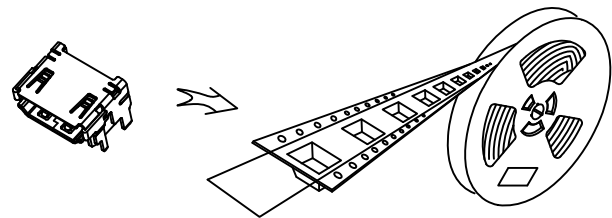
SERIES — NO. OF POS. — CONTACT PLATED OPTION — TAPE REEL PACKAGE — TIN PLATING ON SOLDER TAIL

CONTACT PLATED OPTION  
1: GOLD FLASH  
3: 3u" GOLD  
5: 5u" GOLD  
7: 15u" GOLD  
9: 30u" GOLD



TOLERANCES	
X.±0.40	.XX±0.20
.X±0.30	.XXX±0.10

REV.	A	DRAWN BY	Frank 2020/7/2	TITLE	HDMI, PCB MOUNT, SMT, METAL SHIELD, H=8.35mm, FEMALE				
		APPROVED BY	Lion 2020/7/2	DRAW NO.	BHDBA-006	UNIT	MM	Sheet	1/2



NOTE: 400PCS/ REEL, 4000PCS/ 10 REEL/ CARTON