

**MATERIALS**

HOUSING: POM (UL 94V-0)  
 SHELL: ZINC, NICKEL PLATING  
 POST: COPPER ALLOY, TIN PLATING  
 TERMINAL: COPPER ALLOY, GOLD PLATED ON CONTACT AREA  
 TIN PLATING ON SOLDER TAIL  
 WASHER: IRON, NICKEL PLATING  
 NUT: ZINC, NICKEL PLATING

**TABLE**

φA	IMPEDANCE
4.60	50 OHM
3.00	75 OHM

**PART NUMBER:**

**RBNDE - \* \* T 1 - 1 \* 1**

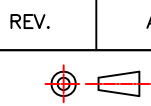
SERIES — RBNDE  
 PACKAGE OPTION 1: TRAY, 4: BAG  
 TIN PLATING ON SOLDER TAIL  
 CONTACT PLATED OPTION

CONTACT PLATED OPTION

- 1: GOLD FLASH
- 3: 3u" GOLD
- 5: 5u" GOLD
- 6: 10u" GOLD
- 7: 15u" GOLD
- 9: 30u" GOLD



TOLERANCES  
 X.±0.40 .XX±0.20  
 .X±0.30 .XXX±0.10



REV. A  
 DRAWN BY Zhong 2018/9/10  
 APPROVED BY Lion 2018/9/10

TITLE BNC, PCB MOUNT, R/A, WITH SQUARE BODY & POST, FEMALE  
 DRAW NO. RBNDE-001 UNIT MM Sheet 1/1