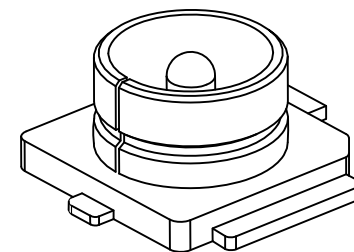


P.C.B LAYOUT
TOP VIEW ±0.05

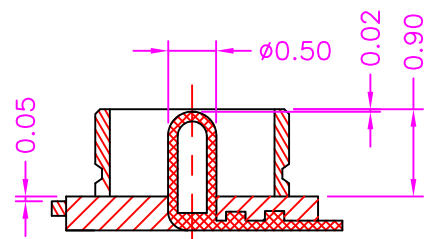
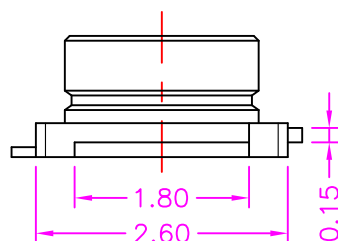
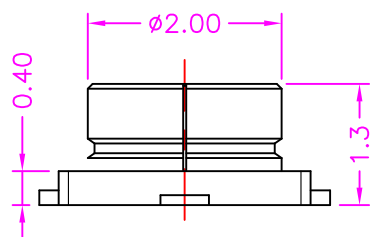


MATERIALS

HOUSING: HI-TEMP. PLASTIC (UL 94V-0)
TERMINAL: COPPER ALLOY, GOLD PLATED

SPECIFICATION

DIELECTRIC WITHSTANDING: 200V AC FOR ONE MINUTE
CONTACT RESISTANCE: 20m OHMS MAX
INSULATION RESISTANCE: 500M OHMS MIN AT DC 100V
OPERATION TEMPERATURE: -40°C~+90°C



PART NUMBER:

RPXCA - 0 * * - 2 2 1

SERIES

TAPE REEL PACKAGE

GROUND CONTACT PLATED OPTION

- 1: GOLD FLASH
- 3: 3u" GOLD
- 5: 5u" GOLD
- 9: 30u" GOLD
- S: SILVER

CENTER CONTACT PLATED OPTION

- 1: GOLD FLASH
- 3: 3u" GOLD
- 5: 5u" GOLD
- 9: 30u" GOLD
- S: SILVER