

PART NUMBER:
F22BK - 0 * C - 1 * 1

SERIES —

— LIGHT PIPES OPTION
 1: WITH INNER & OUTER LIGHT PIPES
 2: WITH OUTER LIGHT PIPES
 3: WITH INNER LIGHT PIPES

— TRAY PACKAGE

— CONNECTOR TERMINAL PLATING OPTION
 1: GOLD FLASH
 3: 3u" GOLD
 7: 15u" GOLD
 9: 30u" GOLD

1

2

3

4

5

6

A

A

B

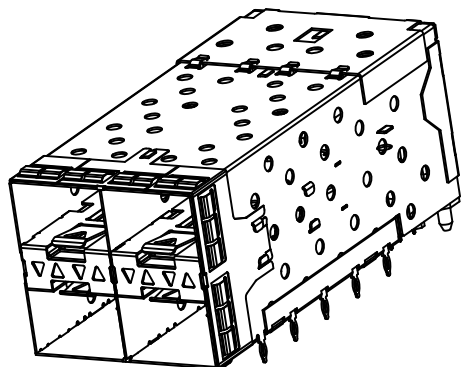
B

C

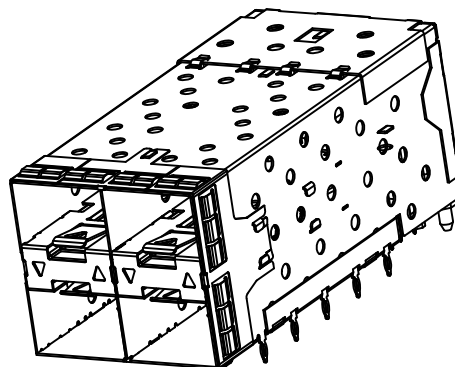
C

D

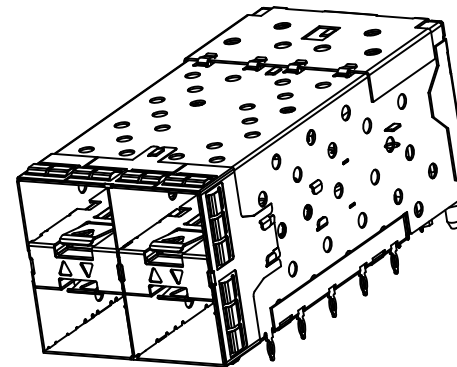
D



F22BK-0*C-113
WITH INNER & OUTER LIGHT PIPES



F22BK-0*C-123
WITH OUTER LIGHT PIPES



F22BK-0*C-133
WITH INNER LIGHT PIPES



TOLERANCES
X.±0.40 .XX±0.20
.X±0.30 .XXX±0.10

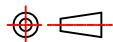
REV.

A

DRAWN BY Zhong 2018/7/16

TITLE

STACKED SFP+ 2x2 CAGE, R/A, METAL SHIELD PRESS FIT TYPE
WITH CONNECTOR & LIGHT PIPE & EMI SPRING



APPROVED BY Lion 2018/7/16

DRAW NO.

F22BK-001

UNIT

MM

Sheet

2/5

1

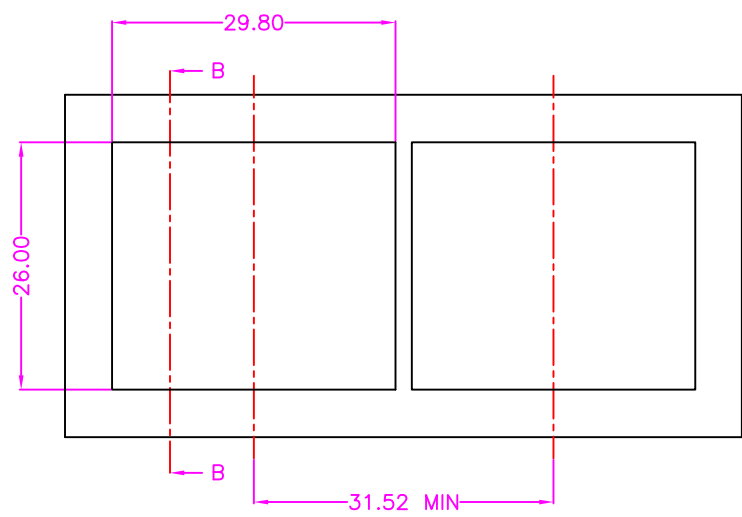
2

3

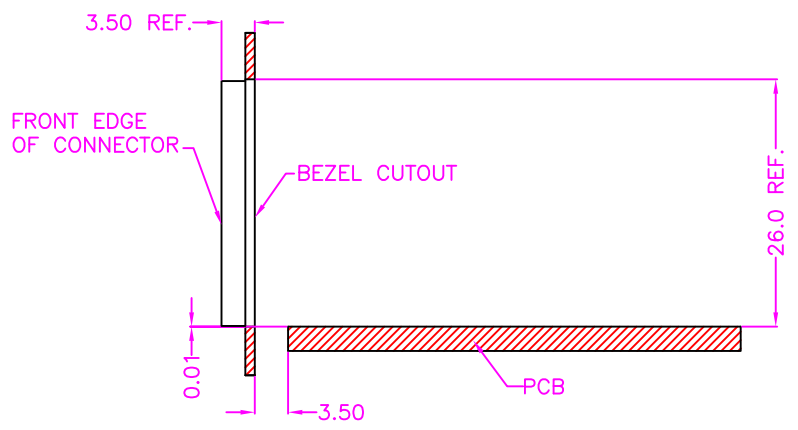
4

5

6



RECOMMENDED PANEL CUTOUT AND PC BOARD
PANEL POSITION AND THICKNESS 0.8-2.6

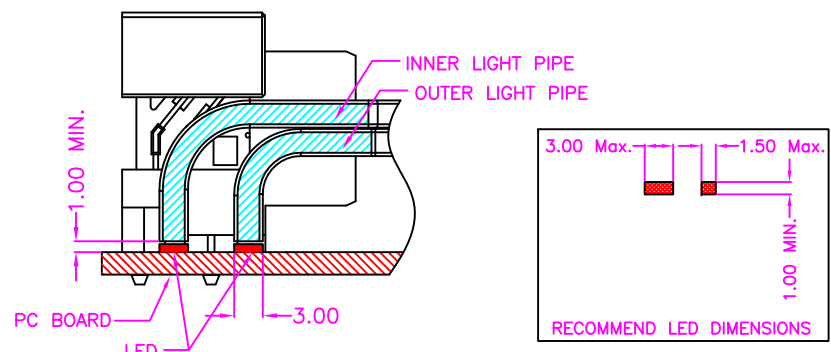


SECTION B-B
BEZEL OPENING ABOVE
TOP OF PC BOARD

MATERIALS

- SFP CONNECTOR
- HOUSING: HI-TEMP. PLASTIC (UL 94V-0), BLACK
- TERMINAL: COPPER ALLOY, GOLD PLATED ON CONTACT AREA
TIN PLATING ON SOLDER TAIL
- SFP CAGE
- TOP SHIELD: COPPER ALLOY
- MIDDLE SHIELD: COPPER ALLOY
- BOTTOM SHIELD: COPPER ALLOY
- BACK SHIELD: COPPER ALLOY
- BRACKET: COPPER ALLOY
- EMI GASKET: COPPER ALLOY

- LIGHT PIPE: PC



LED CLEARANCE REQUIREMENTS



TOLERANCES	
X.±0.40	.XX±0.20
.X±0.30	.XXX±0.10

REV.	A	DRAWN BY	Zhong 2018/7/16	TITLE
		APPROVED BY	Lion 2018/7/16	DRAW NO.

STACKED SFP+ 2x2 CAGE, R/A, METAL SHIELD PRESS FIT TYPE WITH CONNECTOR & LIGHT PIPE & EMI SPRING				
F22BK-001	UNIT	MM	Sheet	3/5

A

B

C

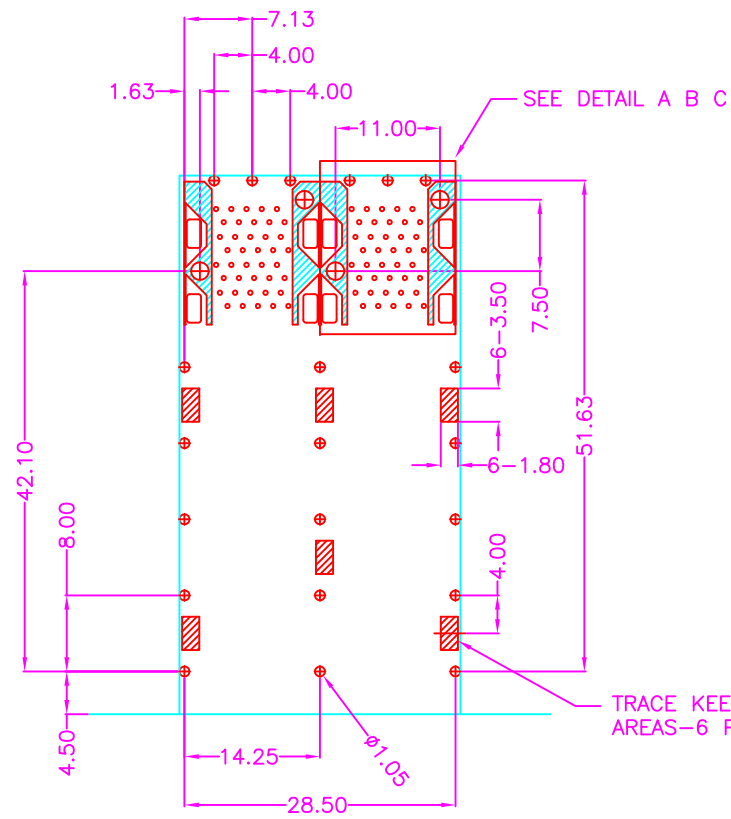
D

A

B

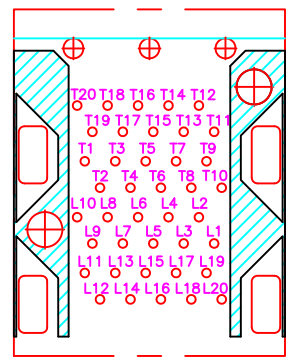
C

D

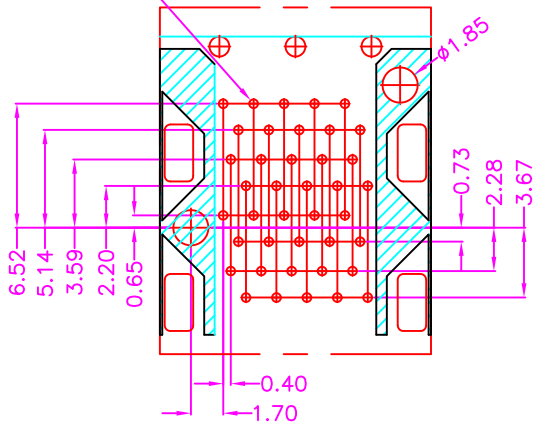


P.C.B LAYOUT
TOP VIEW ±0.05

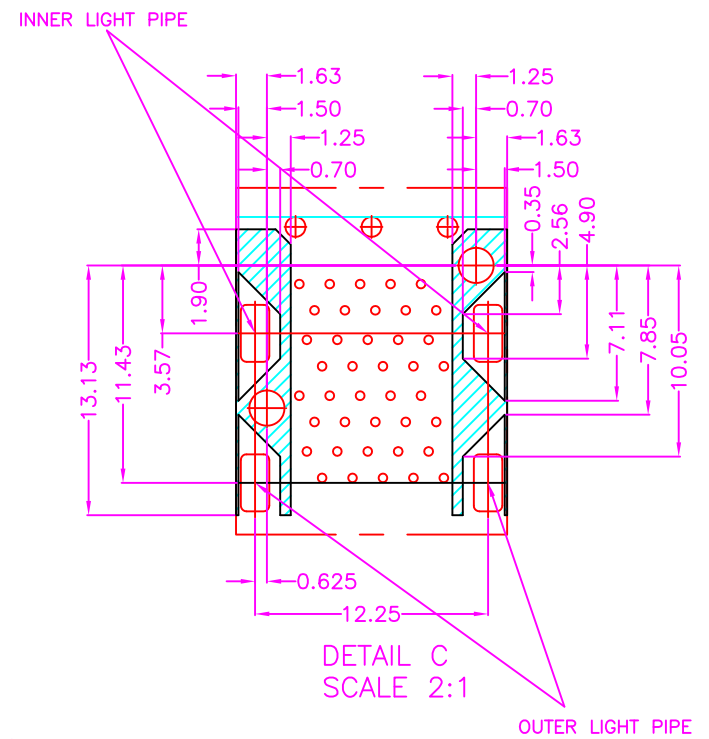
TRACE KEEPOUT
AREAS-6 PLACES



DETAIL A
SCALE 2:1



DETAIL B
SCALE 2:1



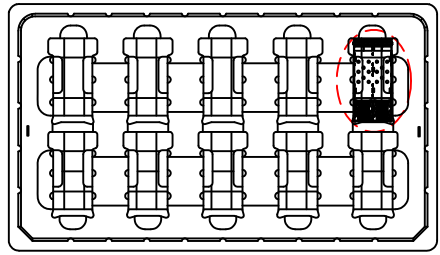
DETAIL C
SCALE 2:1



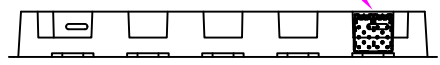
TOLERANCES	
X.±0.40	.XX±0.20
.X±0.30	.XXX±0.10

REV.	A	DRAWN BY	Zhong 2018/7/16	TITLE
		APPROVED BY	Lion 2018/7/16	DRAW NO.

STACKED SFP+ 2x2 CAGE, R/A, METAL SHIELD PRESS FIT TYPE WITH CONNECTOR & LIGHT PIPE & EMI SPRING				
F22BK-001	UNIT	MM	Sheet	4/5



PIN FACING UP



*SPRING MUST BE IN DIRECTION OF ARROW AS SHOWN IN FIGURE 1

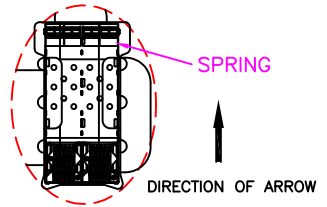
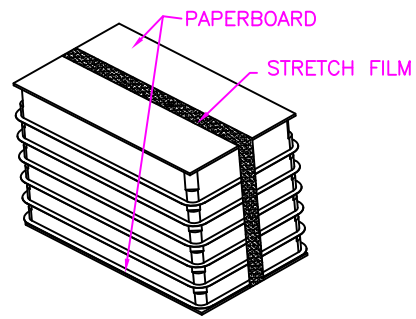
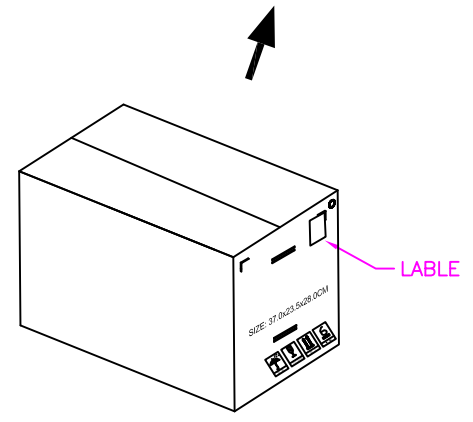
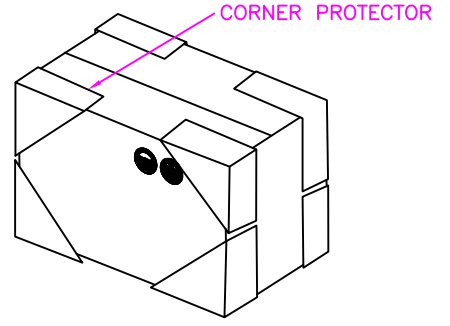
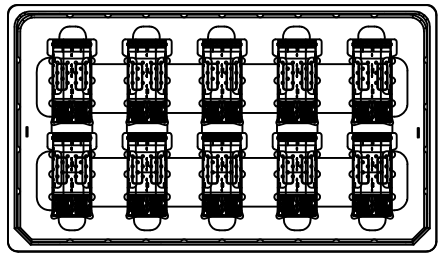
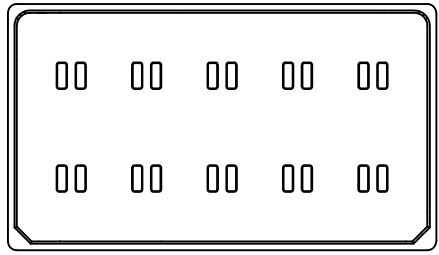


FIGURE 1



NOTE: 10 PCS/TRAY
6 TRAY/CARTON
60 PCS/CARTON