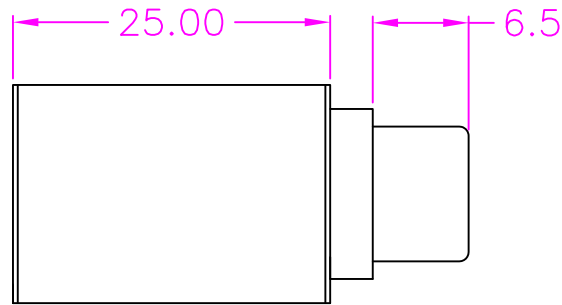
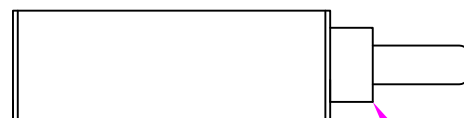


USB 3.1 TYPE C/F



USB 3.1 TYPE C/M



W/LED BLUE

PIN ASSIGNMENT:

USB 3.1 TYPE C FEMALE

USB 3.1 TYPE C MALE

GND	A1.B1.A12.B12	GND_PWR	A1.B1.A12.B12	GND
VBUS	A4.B4.A9.B9	PWR_VBUS	A4.B4.A9.B9	VBUS
	A5	CC	A5	
	B5	VCONN	B5	
D+	A6	UTP_Dp	A6	Dp1
D-	A7	UTP_Dn	A7	Dn1
StdA_SSTXp1+	A2	STP_Dp1	B11	StdA_SSRXp1+
StdA_SSTXn1-	A3	STP_Dn1	B10	StdA_SSRXn1-
StdA_SSRXp1+	B11	STP_Dp2	A2	StdA_SSTXp1+
StdA_SSRXp1-	B10	STP_Dn2	A3	StdA_SSTXp1-
StdA_SSTXp2+	B2	STP_Dn1	A11	StdA_SSRXp2
StdA_SSTXn2-	B3	STP_Dp2	A10	StdA_SSRXn2
StdA_SSRXp2+	A11	STP_Dn2	B2	StdA_SSTXp2
StdA_SSRXn2-	A10	SBU1	B3	StdA_SSTXn2
	A8	SBU2	B8	
	B8		A8	
Shield	SHELL	SHELL	SHELL	Shield

INFORMATION

1. SHELL: ALUMINUM ALLOY
2. PACKAGE: POLY BAG
3. TRANSFER RATE: 10Gbps
4. WITH LED
5. COMPLIANT WITH USB 3.1 PROTOCOL FULL PIN COMPATIBLE
6. RoHS COMPLIANT

PART NUMBER:

SAUSUS - 1 - 4 4 1

