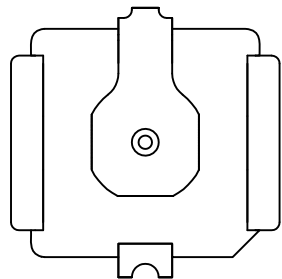
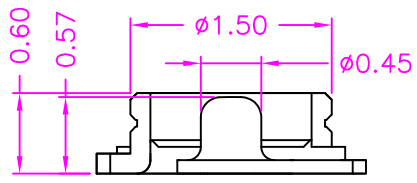
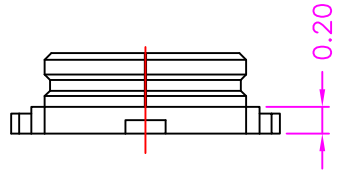


P.C.B LAYOUT  
TOP VIEW ±0.05

- CENTER CONTACT
- SHELL



**MATERIALS**

HOUSING: HI-TEMP. PLASTIC (UL 94V-0)  
TERMINAL: COPPER ALLOY, GOLD PLATED

**SPECIFICATION**

DIELECTRIC WITHSTANDING: 200V AC FOR ONE MINUTE  
CONTACT RESISTANCE: 20m OHMS MAX  
INSULATION RESISTANCE: 500M OHMS MIN AT DC 100V  
OPERATION TEMPERATURE: -40°C~+90°C

PART NUMBER:  
RPXCA - 0 \* \* - 2 2 2

SERIES ——— TAPE REEL PACKAGE

GROUND CONTACT PLATED OPTION

- 1: GOLD FLASH
- 3: 3u" GOLD
- 5: 5u" GOLD
- 9: 30u" GOLD
- S: SILVER

CENTER CONTACT PLATED OPTION

- 1: GOLD FLASH
- 3: 3u" GOLD
- 5: 5u" GOLD
- 9: 30u" GOLD
- S: SILVER



TOLERANCES	
X.±0.40	.XX±0.20
.X±0.30	.XXX±0.10

REV.	A	DRAWN BY	Zhong 2018/2/26	TITLE	MICRO COAXIAL (MODEL 4), SMT, MALE				
		APPROVED BY	Lion 2018/2/26	DRAW NO.	RPXCA-002	UNIT	MM	Sheet	1/1

RPXCA-002	UNIT	MM	Sheet	1/1
-----------	------	----	-------	-----